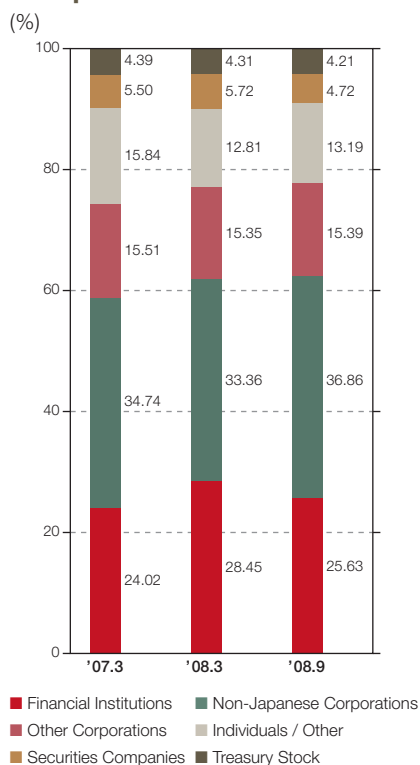


# Stock Information (As of September 30, 2008)

## Common Stock

Authorized: 450,000,000 shares  
 Outstanding: 143,500,000 shares  
 (including 6,037,956 treasury shares)  
 Number of shareholders: 46,004

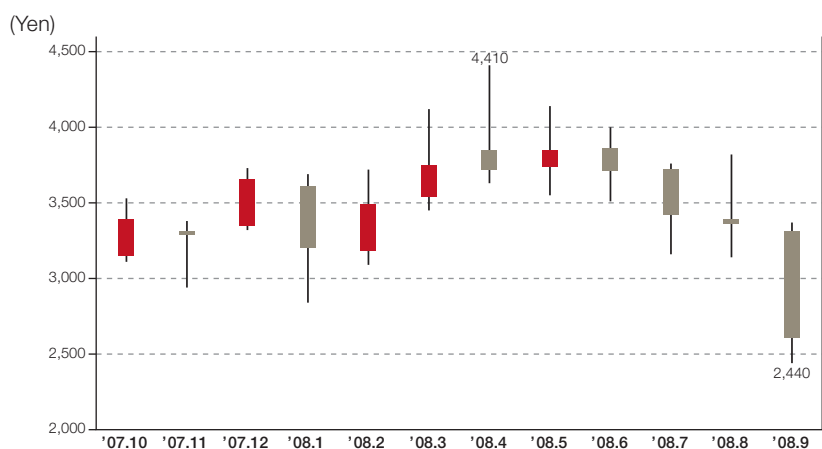
## Composition of Shareholders



## Principal Shareholders

Shareholder's Name	Shares (Thousands)	% of Total
Kozuki Foundation For Sports and Education	14,330	9.99
Kozuki Holding B.V.	13,530	9.43
The Master Trust Bank of Japan, Ltd. (Trust Account)	10,193	7.10
Japan Trustee Services Bank, Ltd. (Trust Account)	10,047	7.00
Kozuki Capital Corporation	7,036	4.90
KONAMI CORPORATION	6,037	4.21
MORGAN WHITEFRIARS EQUITY DERIVATIVES	4,538	3.16
Sumitomo Mitsui Banking Corporation	4,135	2.88
BNP PARIBAS Securities (Japan) Ltd.	3,171	2.21
Japan Trustee Services Bank, Ltd. (Trust Account 4G)	2,953	2.06
Dresdner Kleinwort (Japan) Limited Tokyo Branch	2,786	1.94
Deutsche Securities Inc.	2,542	1.77
Trust & Custody Services Bank, Ltd. (Securities Investment Trust Account)	1,951	1.36
Societe Generale Securities (North Pacific) Limited, Tokyo Branch	1,661	1.16
KONAMI SHAIN MOCHIKABUKAI	1,310	0.91
CALYON DMA OTC	1,189	0.83
NikkoCiti Trust and Banking Corporation (Investment Trust Account)	1,085	0.76
Mizuho Securities Co., Ltd.	1,041	0.73
Mitsubishi UFJ Securities Co., Ltd.	972	0.68
THE CHASE MANHATTAN BANK N.A. LONDON SL OMNIBUS ACCOUNT	833	0.58

## Share Price



# Shareholder Information / Corporate Data

## Shareholder Information

<b>Fiscal Year-End</b>	March 31
<b>Ordinary General Meeting of Shareholders</b>	June
<b>Record Date for Shareholders</b>	Annual shareholders' meeting: March 31 Year-end dividend: March 31 Interim dividend: September 30 Other (when necessary): As announced in advance
<b>Transfer Agent</b>	The Sumitomo Trust and Banking Co., Ltd. 4-5-33, Kitahama, Chuo-ku, Osaka, Japan
<b>Location of Transfer Agent Handling Office</b>	The Sumitomo Trust and Banking Co., Ltd. Stock Transfer Agency Department 2-3-1, Yaesu, Chuo-ku, Tokyo, Japan
■ <b>Mailing Address</b>	The Sumitomo Trust and Banking Co., Ltd. Stock Transfer Agency Department 1-10, Nikko-cho, Fuchu, Tokyo 183-8701, Japan
■ <b>Telephone Inquiries</b>	(Change in address): 0120-175-417 (Other inquiries): 0120-176-417
■ <b>Internet URL</b>	<a href="http://www.sumitomotrust.co.jp/STA/retail/service/daiko/index.html">http://www.sumitomotrust.co.jp/STA/retail/service/daiko/index.html</a>
<b>Intermediary Offices</b>	The Sumitomo Trust and Banking Co., Ltd. Head Office and all branches in Japan
<b>Public Notices</b>	Shown on the Company website. <a href="http://www.konami.co.jp">http://www.konami.co.jp</a>
<b>Stock Exchange Listings</b>	Tokyo, New York, London, and Singapore

The Sumitomo Trust and Banking Co., Ltd., carries out various procedures related to the handling of KONAMI shares.

For more details on share-handling procedures, please visit The Sumitomo Trust and Banking Co., Ltd.'s website.

## For ADR Holders

**Depository and Transfer Agent for American Depositary Receipts:**  
JPMorgan Chase Bank, N.A.  
4 New York Plaza, 13th Floor, New York, NY 10004, U.S.A.

**ADR Holder Contact:** JPMorgan Service Center

JPMorgan ADR Holder Transfer Services:

### Telephone

Toll-free U.S. & Canada 1-800-990-1135  
Outside U.S. 1-651-453-2128  
Hearing impaired 1-866-700-1652  
Automated IVR system is available 24 hours / 7 days a week.  
Representatives are available 9:00 am to 7:00 pm EST weekdays.

### Internet

Visit <http://www.adr.com> and go to Shareholder Services page.

### Mail for regular correspondence

JPMorgan Chase Bank, N.A.  
P.O. Box 64504 St. Paul, MN 55164-0504, U.S.A.

## Corporate Data (As of September 30, 2008)

<b>Company Name</b>	KONAMI CORPORATION
<b>Representative</b>	Kagemasa Kozuki, President and Representative Director
<b>Headquarters</b>	9-7-2, Akasaka, Minato-ku, Tokyo 107-8323, Japan TEL: 81-3-5770-0573 FAX: 81-3-5412-3300
<b>Founded</b>	March 21, 1969
<b>Incorporated</b>	March 19, 1973
<b>Paid-in Capital</b>	¥47,399 million
<b>Home Page URL</b>	<a href="http://www.konami.co.jp/en">www.konami.co.jp/en</a>

## Guide to Investor Relations Site

Our website includes an investor relations section that provides easy access to our latest financial information, news releases, and other relevant IR information.

**URL:** [www.konami.co.jp/en/ir](http://www.konami.co.jp/en/ir)